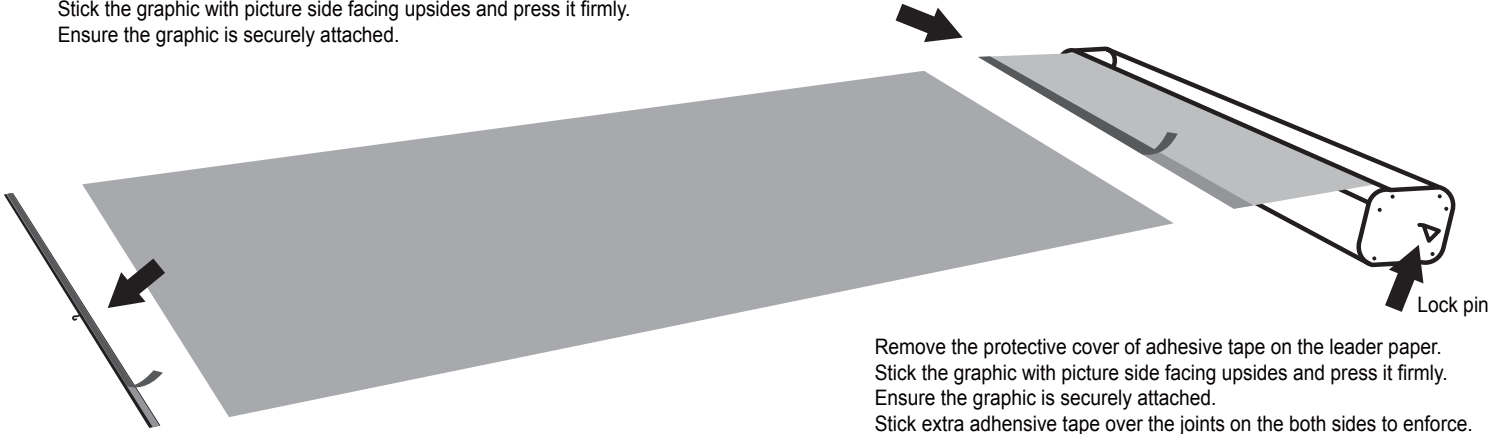


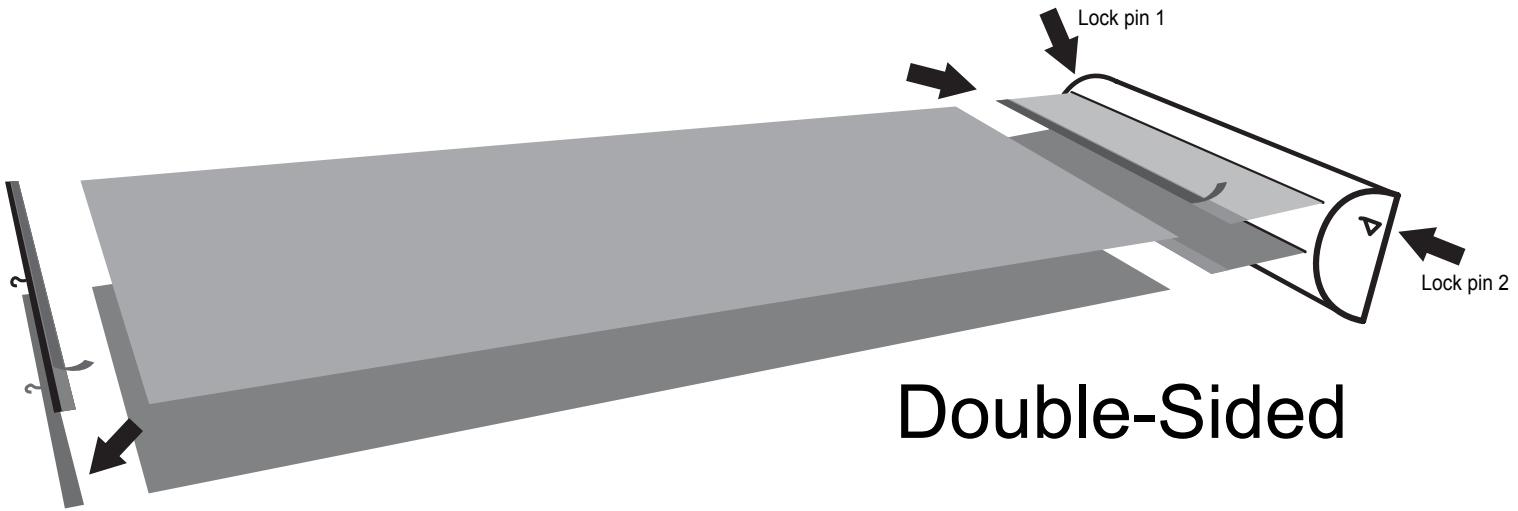
Replacement Banner

Remove the protective cover of adhesive tape on the top trim.
Stick the graphic with picture side facing upsides and press it firmly.
Ensure the graphic is securely attached.



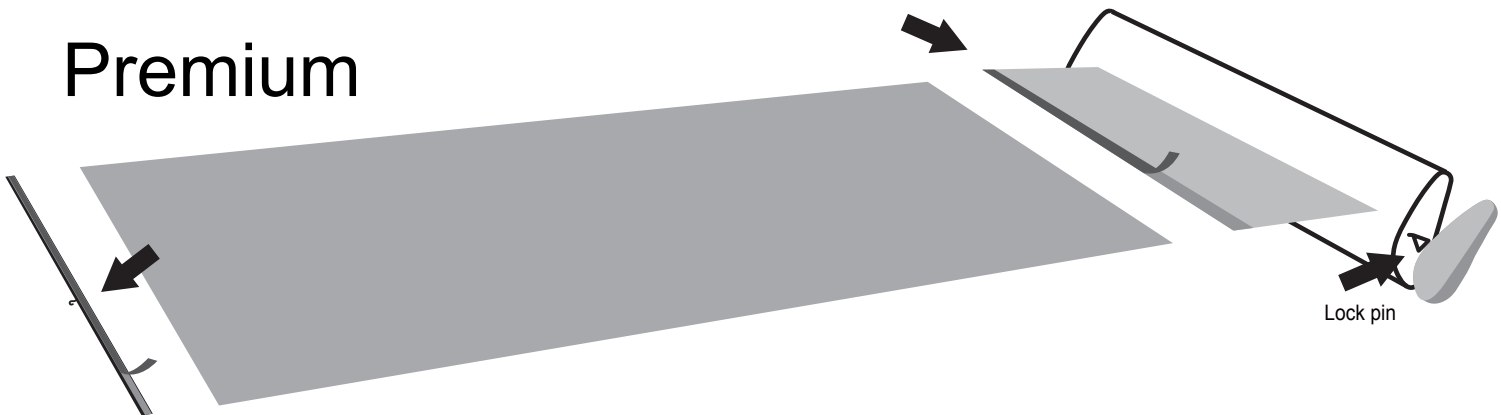
Standard

Remove the protective cover of adhesive tape on the leader paper.
Stick the graphic with picture side facing upsides and press it firmly.
Ensure the graphic is securely attached.
Stick extra adhesive tape over the joints on the both sides to enforce.



Double-Sided

Premium



IMPORTANT:

DO NOT remove the lock pin from the base unit at any stage other than that directed in the instructions below

Download an invoice on our website

Please login to our website to download your latest invoice,
or contact us for help service@flagaholic.com

Canada
United States
New Zealand
Australia

www.flagaholic.ca/account.html
www.flagaholic.com/account.html
www.banneraholic.co.nz/account.html
www.banneraholic.com.au/account.html